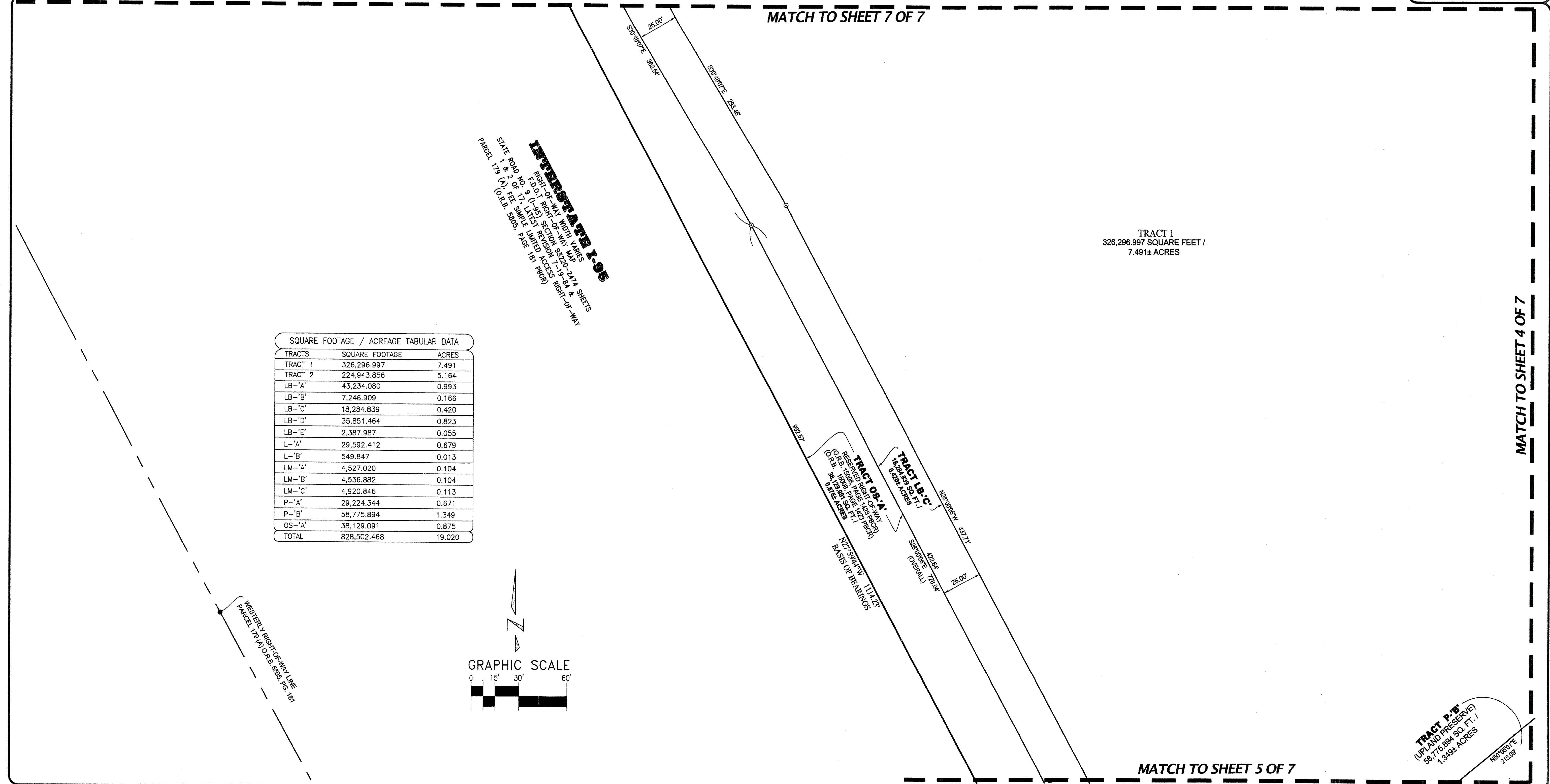
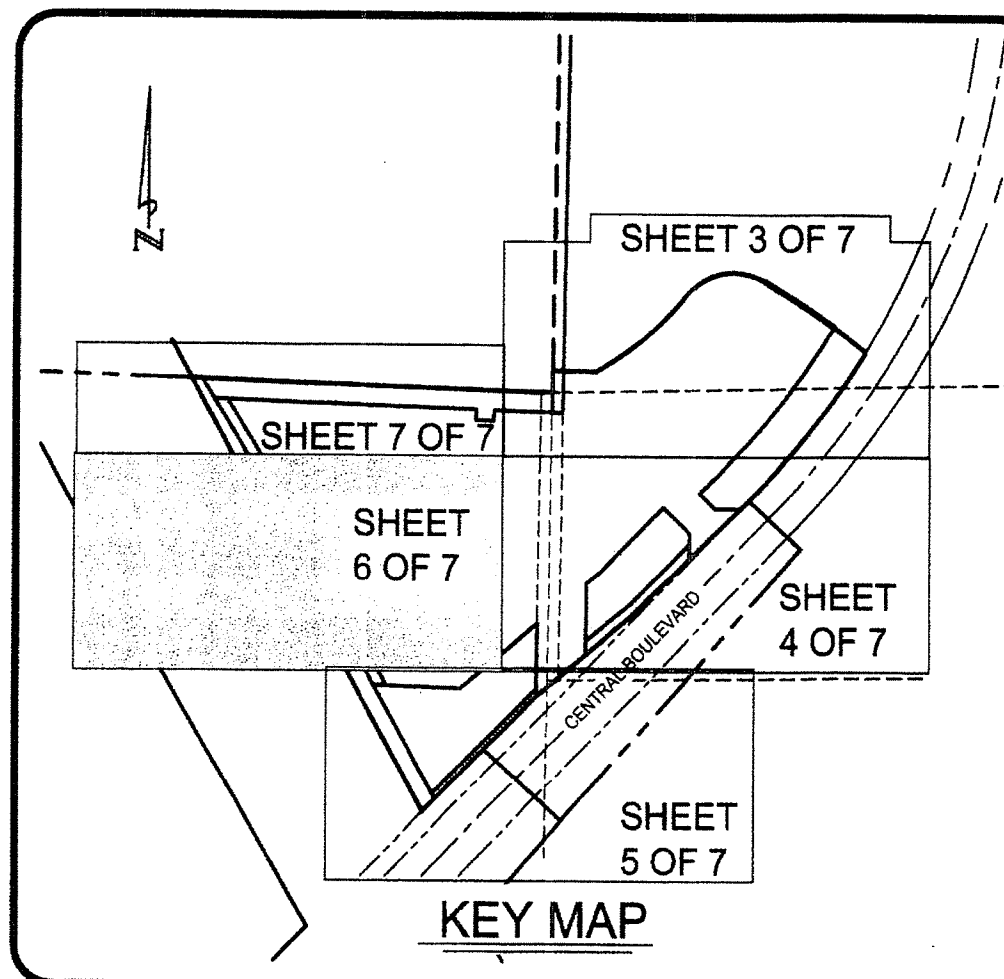


P. 10

# CENTRAL GARDENS PLAT TWO

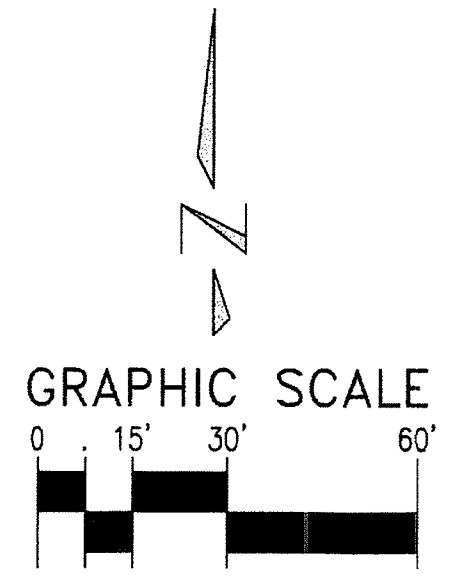
BEING A REPLAT OF TRACT B, TRACT LB-2, TRACT LB-3, TRACT LB-5, TRACT LB-6, TRACT LB-7, TRACT P-2, TRACT P-3 & TRACT OS-1, CENTRAL GARDENS, PLAT BOOK 115, PAGES 190 THROUGH 195 & BEING A PORTION OF SECTIONS 35 & 36, TOWNSHIP 41 SOUTH, RANGE 42 EAST, CITY OF PALM BEACH GARDENS, PALM BEACH COUNTY, FLORIDA  
SHEET 6 OF 7  
NOVEMBER 2015

STATE OF FLORIDA  
COUNTY OF PALM BEACH  
THIS PLAT WAS FILED  
FOR RECORD AT \_\_\_\_\_M.  
THIS DAY OF \_\_\_\_\_, 2015  
AND DULY RECORDED IN PLAT  
NO. \_\_\_\_\_ ON PAGES \_\_\_\_\_  
THRU \_\_\_\_\_  
SHARON R. BOCK  
CLERK AND COMPTROLLER  
BY: \_\_\_\_\_ D.C.



SQUARE FOOTAGE / ACREAGE TABULAR DATA

TRACTS	SQUARE FOOTAGE	ACRES
TRACT 1	326,296.997	7.491
TRACT 2	224,943.856	5.164
LB-A	43,234.080	0.993
LB-B	7,246.909	0.166
LB-C	18,284.839	0.420
LB-D	35,851.464	0.823
LB-E	2,387.987	0.055
L-A	29,592.412	0.679
L-B	549.847	0.013
LM-A	4,527.020	0.104
LM-B	4,536.882	0.104
LM-C	4,920.846	0.113
P-A	29,224.344	0.671
P-B	58,775.894	1.349
OS-A	38,129.091	0.875
TOTAL	828,502.468	19.020



**LEGEND OF SYMBOLS:**  
 4"x4" CONC. MON. STAMPED "P.R.M. LB4897" OR AS NOTED  
 Δ = MAG NAIL & DISK STAMPED "P.R.M. LB 4897" OR AS NOTED  
 ○ = CHANGES OF DIRECTION, P.C.'S OR P.T.'S FOR TRACT LINES  
 ● = CHANGES OF DIRECTION, P.C.'S OR P.T.'S FOR EASEMENT LINES

**PROPERTY CONTROL ABBREVIATIONS:**  
 P.C.P. = PERMANENT CONTROL POINT  
 P.R.M. = PERMANENT REFERENCE MONUMENT  
 CONC. = CONCRETE  
 MON. = MONUMENT  
 M.N.D. = MAG NAIL & DISK

**LEGEND OF ABBREVIATIONS:**  
 ° = DEGREES  
 ' = MINUTES  
 " = SECONDS  
 R = RADIUS  
 Δ = DELTA  
 L = ARC LENGTH  
 CB = CHORD BEARING  
 P.C. = POINT OF CURVATURE  
 P.T. = POINT OF TANGENCY  
 P.R.C. = POINT OF REVERSE CURVE  
 RAD. = RADIAL  
 N.R. = NON-RADIAL  
 T = TANGENT  
 ARITHMETIC / ANNOTATION ABBREVIATIONS  
 N.T. = NON-TANGENT  
 C/L = CENTERLINE  
 P.B. = PLAT BOOK  
 D.B. = DEED BOOK  
 O.A. = OVERALL  
 D.R.B. = OFFICIAL RECORD BOOK  
 PG. = PAGE  
 P.O.C. = POINT OF COMMENCEMENT  
 P.O.B. = POINT OF BEGINNING  
 P.O.T. = POINT OF TERMINUS  
 R.P.B. = ROAD PLAT BOOK  
 L.B. = LICENSED BUSINESS  
 P.S.M. = PROFESSIONAL SURVEYOR & MAPPER

**EASEMENT / MISCELLANEOUS ABBREVIATIONS:**  
 L.A.E. = LIMITED ACCESS EASEMENT  
 L.B.E. = LANDSCAPE BUFFER EASEMENT  
 L.M.E. = LAKE MAINTENANCE EASEMENT  
 S.L.E. = SANITARY SEWER LINE EASEMENT  
 W.L.E. = WATER LINE EASEMENT  
 PBCR = PALM BEACH COUNTY RECORDS  
 D.E. = DRAINAGE EASEMENT  
 U.E. = UTILITY EASEMENT  
 S.U.A. = SEACOAST UTILITY AUTHORITY  
 F.P.L. = FLORIDA POWER & LIGHT COMPANY

**KESHAVARZ & ASSOCIATES**  
 Civil Engineers • Land Surveyors  
 711 North Dixie Highway, Suite 201  
 West Palm Beach, Florida 33401  
 Tel: (561) 689-8600 Fax: (561) 689-5150

THIS INSTRUMENT WAS PREPARED BY SCOTT F. BRYSON, IN AND FOR THE OFFICES OF KESHAVARZ & ASSOCIATES, INC. 711 NORTH DIXIE HIGHWAY, SUITE 201, WEST PALM BEACH, FLORIDA 33401 TELEPHONE (561) 689-8600.

DATE: 01/30/15	CHECKED: SB	PROJECT No. 13-1005	SHEET No. 6 OF 7
SCALE: 1" = 30'	APPROVED: SB		
DRAWN: SB/RB	DWG No: D13-1005P		